

# Franklyn James



## 4 Baltimore Wharf, , London, E14 9AQ Asking Price £525,000

This stunning two-bedroom, two-bathroom apartment is set within the sought-after Baltimore Wharf development, moments from the vibrant heart of Canary Wharf. Designed with contemporary living in mind, the property offers a bright open-plan living area, floor-to-ceiling windows, and a private balcony with far-reaching views.

The sleek, fully fitted kitchen comes complete with integrated appliances, while both bedrooms are generously sized, with the principal bedroom benefiting from an en-suite. The stylish main bathroom is finished to a high standard and was the original Show Apartment for Baltimore.

Residents can enjoy access to premium facilities, including a 24-hour concierge, on-site gym, swimming pool, and leisure amenities. Located just a short walk from Crossharbour DLR and Canary Wharf's shops, restaurants, and transport links, this apartment offers the perfect combination of luxury and convenience.

- Two double bedrooms
- Two bathrooms
- Open-plan reception with modern kitchen
- Private balcony with great views
- 24-hour concierge
- Leisure facilities
- Excellent transport links via DLR, Jubilee, and Elizabeth line
- Secure valet parking in underground car park

### Viewing

Please contact our Limehouse Sales Office on 02077914777 if you wish to arrange a viewing appointment for this property or require further information.



2



2



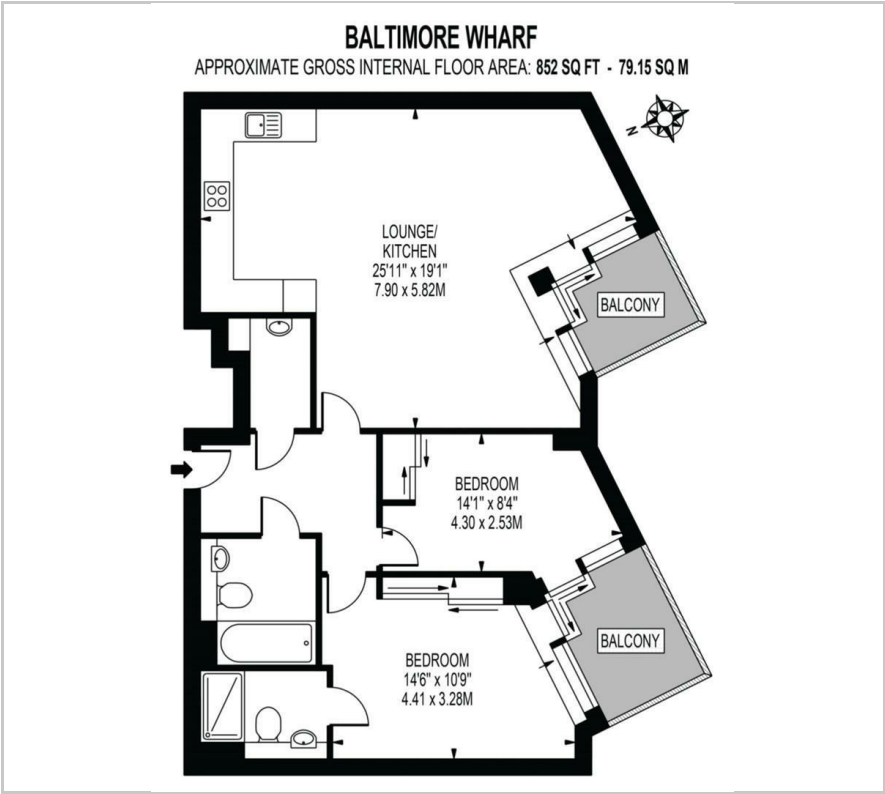
1



C



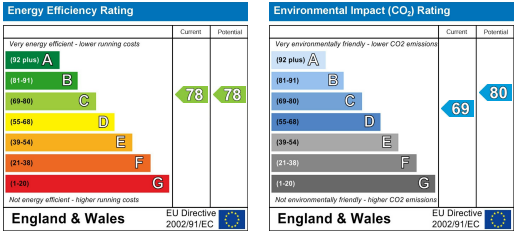
Floor Plan



Area Map



Energy Efficiency Graph



These particulars, whilst believed to be accurate are set out as a general outline only for guidance and do not constitute any part of an offer or contract. Intending purchasers should not rely on them as statements of representation of fact, but must satisfy themselves by inspection or otherwise as to their accuracy. No person in this firm's employment has the authority to make or give any representation or warranty in respect of the property.